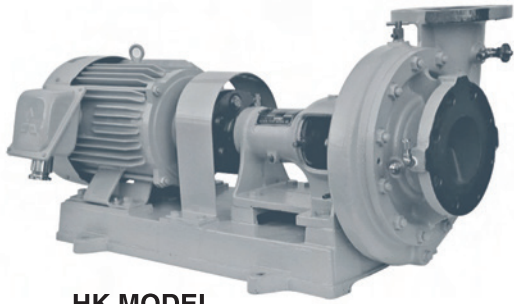


# CENTRIFUGAL PUMP

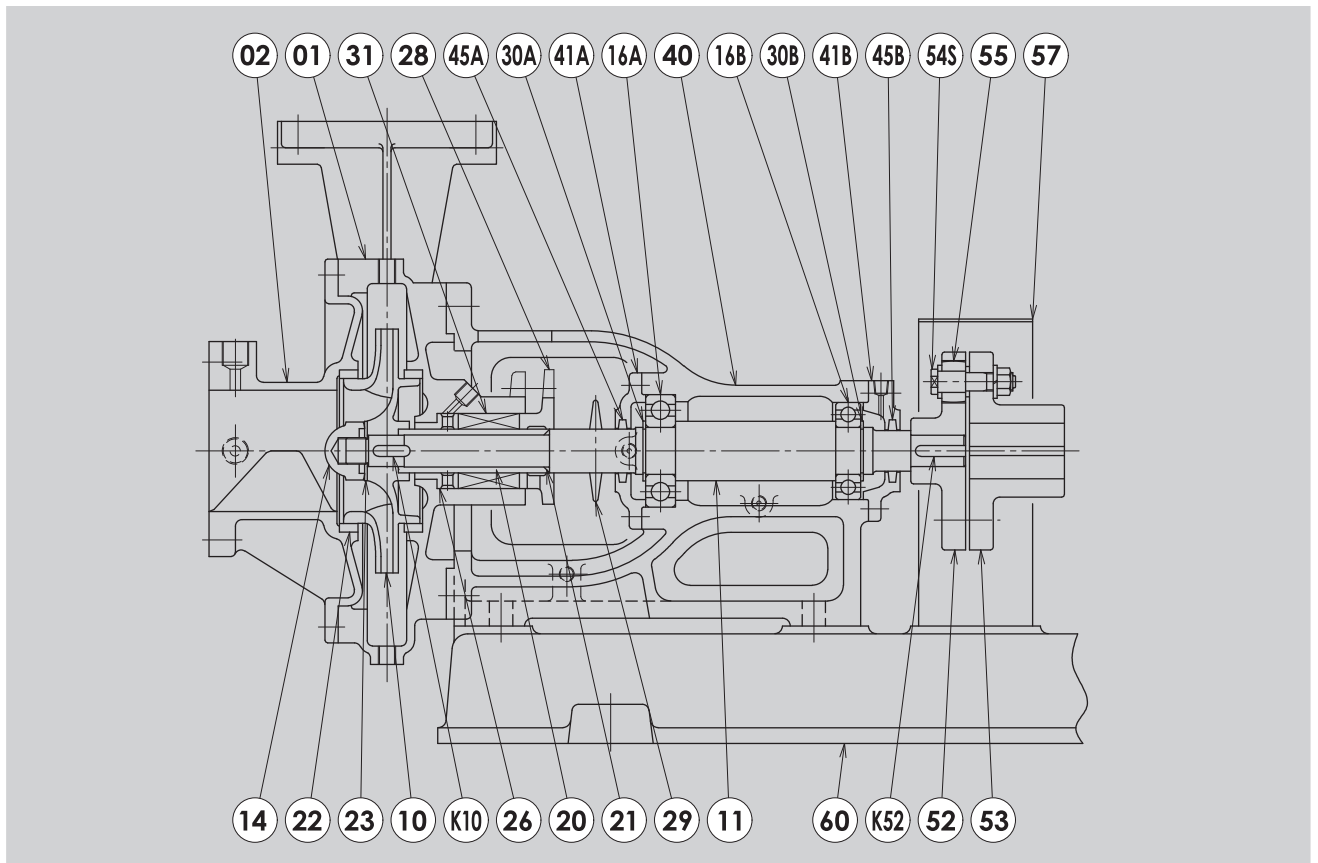
## HK Model



HK MODEL

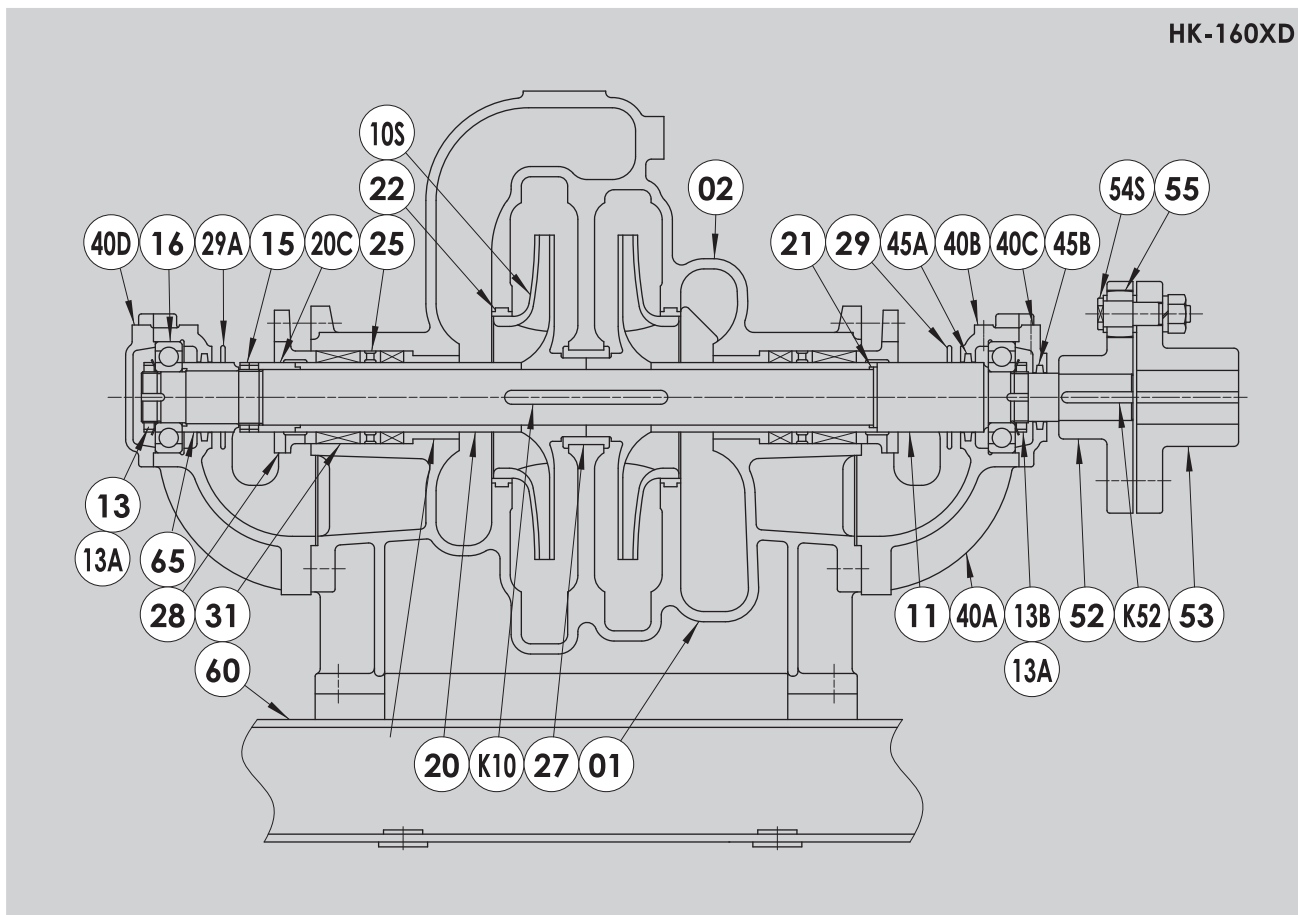
用途/Service

- \* 清水ポンプ
  - \* 飲料水ポンプ
  - \* サニタリーポンプ
  - \* 冷却水ポンプ
  - \* 海水ポンプ
  - \* その他
- \* Fresh Water Pump
  - \* Drinking Water Pump
  - \* Sanitary Pump
  - \* Cooling Water Pump
  - \* Sea Water Pump
  - \* Others



PART NO.	NAME OF PART	MATERIAL NOMINATION	QTY.
01	Casing	Cast Iron or Bronze	1
02	Casing Cover	Cast Iron or Bronze	1
10	Impeller	Phosphor Bronze Casting	1
11	Pump Shaft	Stainless Steel	1
14	Impeller Nut	High Tension Brass	1
16A	Ball Bearing	High Carbon bear Steel	1
16B	Ball Bearing	High Carbon bear Steel	1
20	Shaft Sleeve	Stainless Steel	1
21	O Ring	Synthetic Rubber	1
22	Mouth Ring	Leaded Bronze Casting	2
23	Impeller Washer	Stainless Steel	1
26	Seal Bush	Leaded Bronze Casting	1
28	Packing Gland	Bronze Cast	1
29	Water Shelter	Synthetic Rubber	1
30A	Retaining Ring	Carbon Tool Steel	1

PART NO.	NAME OF PART	MATERIAL NOMINATION	QTY.
30B	Retaining Ring	Carbon tool Steel	1
31	Gland Packing	Carbonized Fiber Packing	1 Set
40	Bearing Case	Cast Iron	1
41A	Bearing Cover	Cast Iron	1
41B	Bearing Cover	Cast Iron	1
45A	Felt Ring	Felt	1
45B	Felt Ring	Felt	1
52	Flexible Coupling	Cast Iron	1
53	Flexible Coupling	Cast Iron	1
54S	Coupling Bolt Complete	Mild Steel	1 Set
55	Buffer Ring	Synthetic Rubber	1 Set
57	Coupling Cover	Mild Steel	1
60	Common Bed	Cast Iron	1
K10	Key For Impeller	Stainless Steell	1
K52	Key For Coupling	Carbon Steel	1

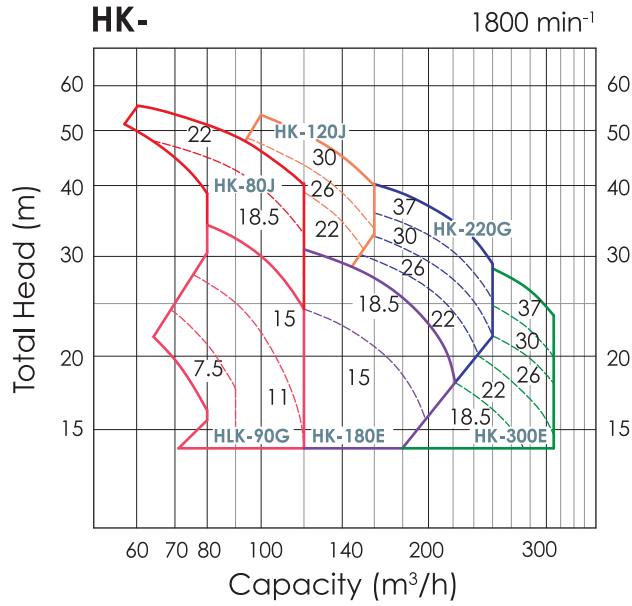


PART NO.	NAME OF PART	MATERIAL NOMINATION	QTY.
01	CASING	CAST IRON/BRONZE CASTING	1
02	CASING COVER	CAST IRON/BRONZE CASTING	1
10S	IMPELLER	PHOSPHOR BRONZE CASTING/STAINLESS STEEL CASTING	1 SET
11	PUMP SHAFT	STAINLESS STEEL	1
13	BEARING NUT	MILD STEEL	1
13A	BEARING WASHER	COLD-REDUCED CARBON STEEL	2
13B	BEARING NUT	MILD STEEL	1
15	SLEEVE NUT	HIGH TENSION BRASS	2
16	BALL BEARING	HIGH CARBON BEAR STEEL	2
20	SHAFT SLEEVE	STAINLESS STEEL	2
20C	PACKING SLEEVE	STAINLESS STEEL	1
21	O RING (FOR SHAFT SLEEVE)	SYNTHETIC RUBBER	2
22	MOUTH RING	LEADED BRONZE CASTING	2
24	NECK BUSH	LEADED BRONZE CASTING	2
25	SEAL CAGE	BRONZE CASTING	2
27	STAGE BUSH	LEADED BRONZE CASTING	1
28	PACKING GLAND	BRONZE CASTING	2

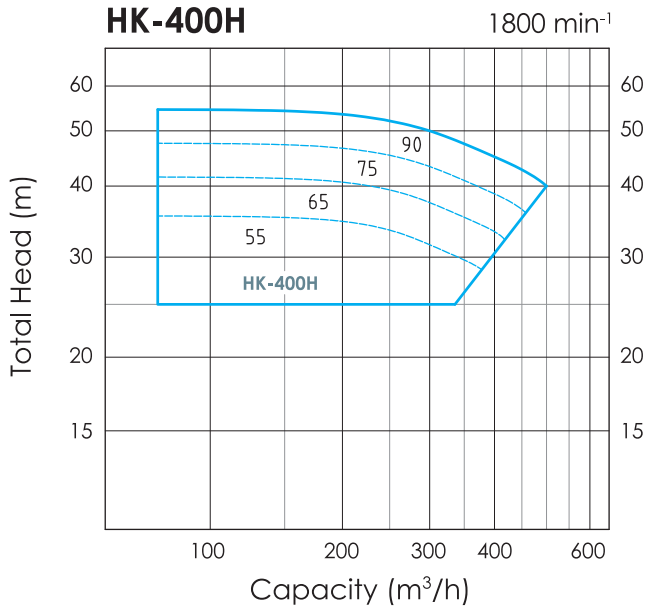
PART NO.	NAME OF PART	MATERIAL NOMINATION	QTY.
29	WATER SHELTER	BRASS	1
29A	WATER SHELTER	BRASS	1
31	GLAND PACKING	CARBONIZED FIBER PACKING	2 SET
40A	BEARING CASE	CAST IRON	2
40B	BEARING COVER	CAST IRON	2
40C	BEARING COVER	CAST IRON	1
40D	BEARING COVER	CAST IRON	1
45A	FELT RING	FELT	2
45B	FELT RING	FELT	1
52	FLEXIBLE COUPLING (PUMP)	CAST IRON	1
53	FLEXIBLE COUPLING (MOTOR)	CAST IRON	1
54S	COUPLING BOLT COMPLETE	MILD STEEL	1 SET
55	BEFFER RING	SYNTHETIC RUBBER	1 SET
60	COMMON BED	MILD STEEL	1
65	DISTANCE RING	STAINLESS STEEL	1
K10	KEY FOR IMPELLER	STAINLESS STEEL	1
K52	KEY FOR COUPLING	CARBON STEEL	1

# HK MODEL PERFORMANCE CHART

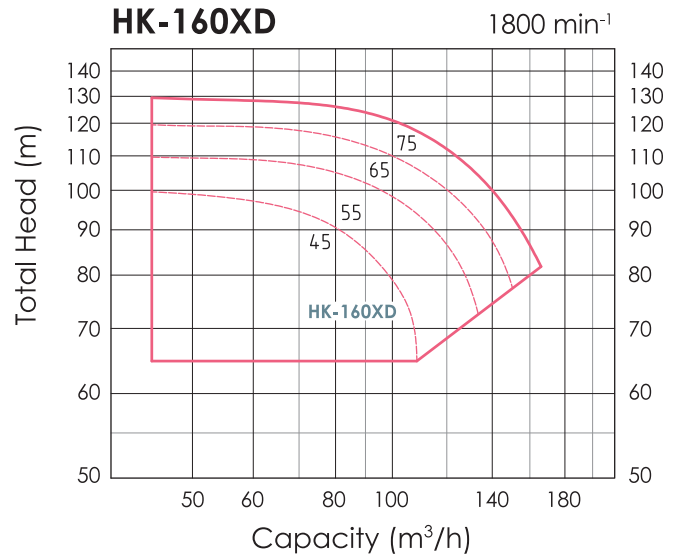
## HORIZONTAL SINGLE STAGE SINGLE SUCTION



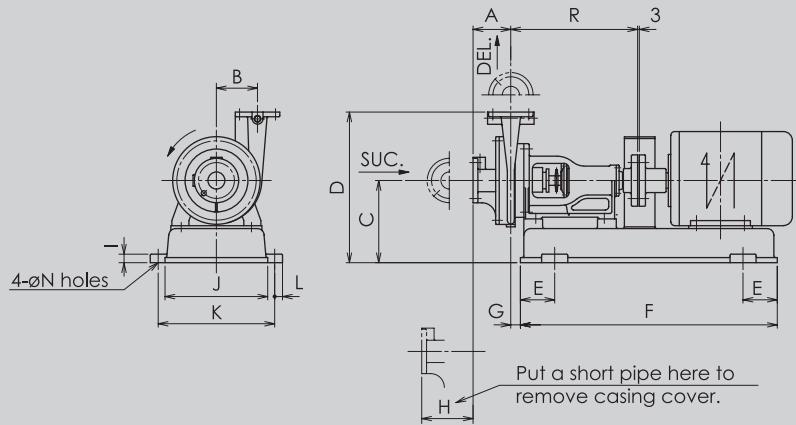
## HORIZONTAL SINGLE STAGE SINGLE SUCTION



## HORIZONTAL TWO STAGE SINGLE SUCTION

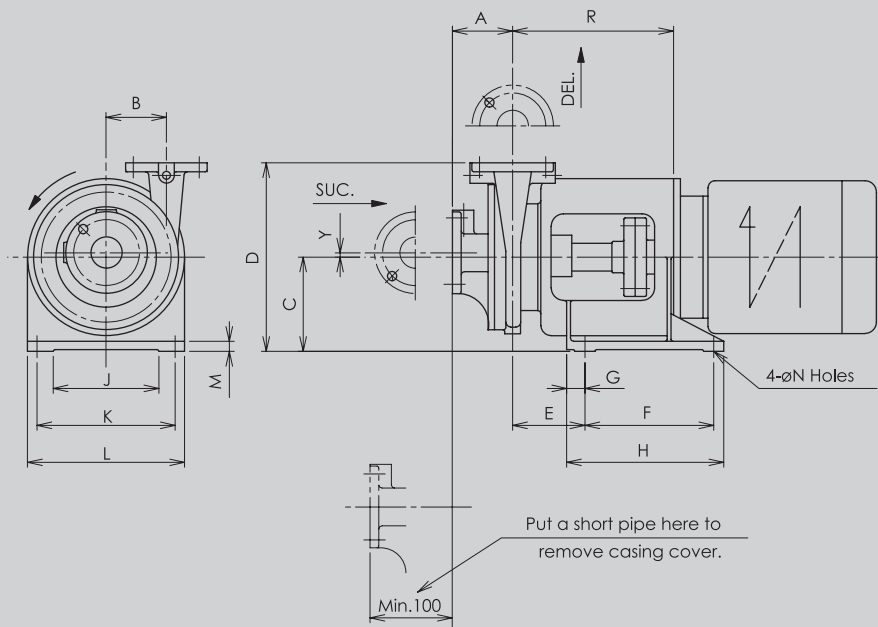


# HK MODEL OUTLINE DRAWING



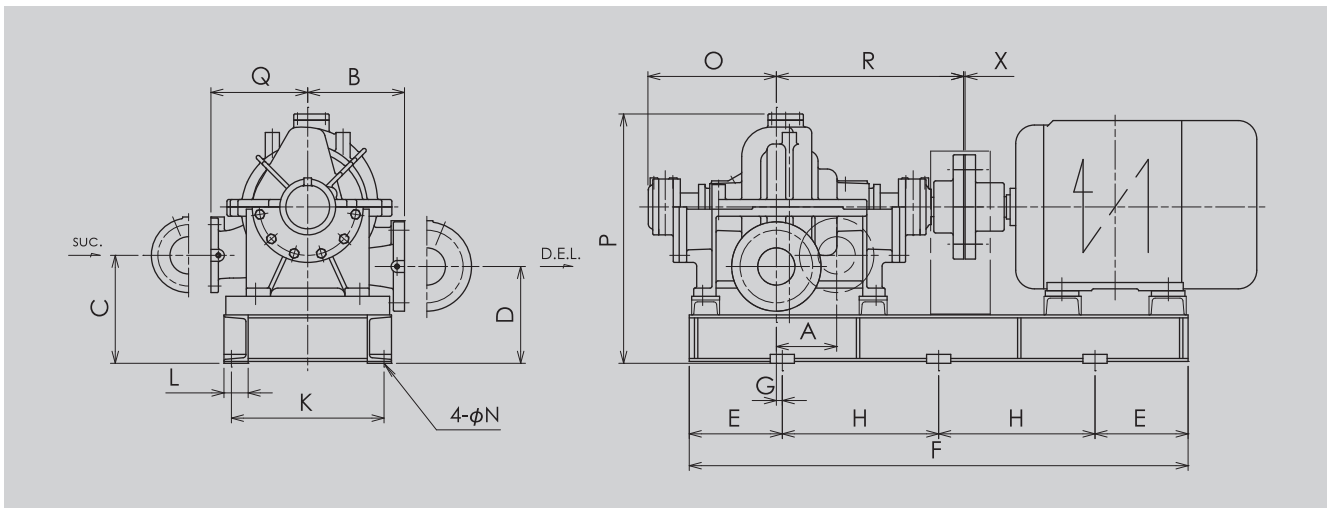
Dimensions : mm

Model	Motor (kW)	Bore		A	B	C	D	E	F	G	H	I	J	K	L	N	R	Mass (kg)			
		Suc.	Del.																		
■ HK-80J	18.5	125	125	156	205	290	580	150	960	35	Min 100	30	390	440	25	19	480	240			
	22																				
■ HK-120J	26	150	150	160	230	282.5	590	175	1000	65	Min 120	30	400	450	25	19	555	250			
	30																				
■ HK-180E	15	200	200	178	190	246	590	150	950	40	Min 100	30	350	400	25	19	485	250			
	18.5					266	610	150	960	390			440								
■ HK-220G	22	200	200	177	230	277.5	640	175	1000	70	Min 120	30	400	450	25	19	560	320			
	26					277.5	640	200	1050	65			30	400					450	25	19
	30					277.5	640	200	1050	65			30	400					450	25	19
	37					245.5	608	150	750	70			25	300					340	23	15
■ HK-300E	18.5	250	250	200	235	255	640	175	1000	70	Min 100	30	400	450	25	19	560	305			
	22					255	640	175	1000	70			30	400					450	25	19
	26					255	640	200	1050	65			30	400					450	25	19
	30					255	640	200	1050	65			30	400					450	25	19
	37					223	608	150	750	70		25	300	340	23	15					



Dimensions : mm

Model	Bore (JIS)	A	B	C	D	E	F	G	H	J	K	L	M	N	R	Y	Mass (kg)
■ HLK-90G	125-125	148	180	235	505	145	335	42.5	400	284	355	400	22	23	328	-3.5	180



Dimensions : mm

Model	Motor (kW)	Bore	A	B	C	D	E	F	G	H	K	L	N	O	P	Q	R	X	Mass (kg)	
■ HK-160XD	75	150-16K 150	222	350	315	200	630	111	630	75	19	450	900	350	413	4	635			
	65				285		250		580									580	480	835
	55																			
	45																			