

ODM CleanTrack 1000

Oil Discharge Monitoring And Control System

MAIN FEATURES ►

CleanTrack 1000 <Main Features>



Computer Unit without printer, with graphic LCD



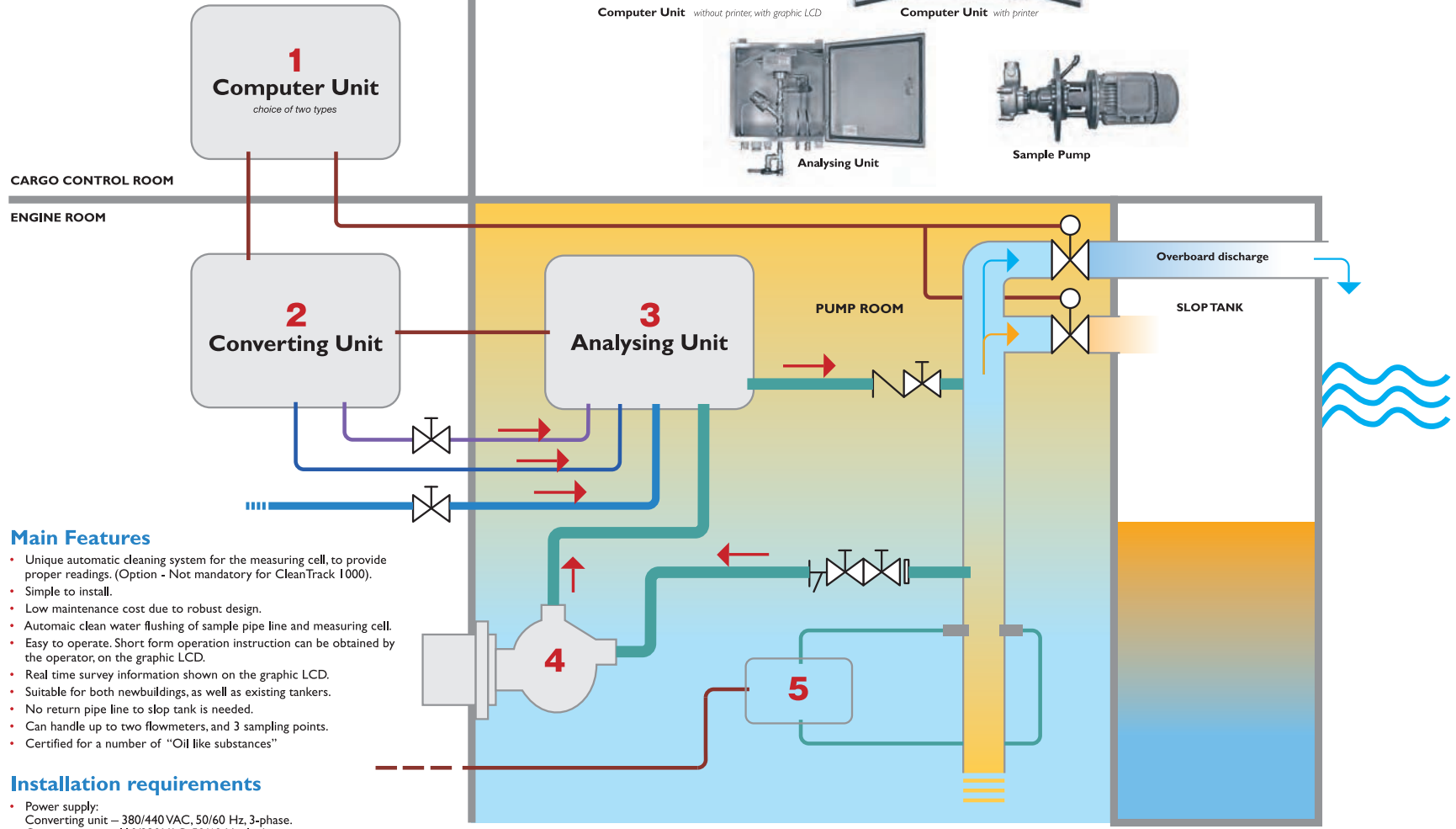
Computer Unit with printer



Analysing Unit



Sample Pump



Main Features

- Unique automatic cleaning system for the measuring cell, to provide proper readings. (Option - Not mandatory for CleanTrack 1000).
- Simple to install.
- Low maintenance cost due to robust design.
- Automatic clean water flushing of sample pipe line and measuring cell.
- Easy to operate. Short form operation instruction can be obtained by the operator, on the graphic LCD.
- Real time survey information shown on the graphic LCD.
- Suitable for both newbuildings, as well as existing tankers.
- No return pipe line to slop tank is needed.
- Can handle up to two flowmeters, and 3 sampling points.
- Certified for a number of "Oil like substances"

Installation requirements

- Power supply:
Converting unit – 380/440 VAC, 50/60 Hz, 3-phase.
Computer unit – 110/220 VAC, 50/60 Hz, 1-phase.
- Fresh water supply:
50 L/H average, 600 L/H intermittent.
- Air supply:
5-7 Bar, clean dry air.



- 1 Computer unit
- 2 Converting unit
- 3 Analysing unit
- 4 Sample pump
- 5 Flow meter